

# Rudheath & Witton Together Newsletter

## September 2022

### Summer Fun Activities

Once again thanks to funding from HAF (Holiday Activity Fund) RWT alongside Bethel Church were able to put on some summer activities for local children and families during the school holidays.

We had around 1,200 people come along over the summer and take part in activities such as crafts, sports, crazy golf, yoga, bouncy castle, gingerbread decorating, food making, teddy bear hunt and packed lunches.



A huge thanks to all who came along and made it a success. We couldn't have done it without the support of HAF, Northwich Town Council, Roberts Bakery, Victoria Road Children's Centre, our other providers and our brilliant volunteers Nic and Linda!

### Welcome

Page 1...Summer Fun Activities

Page 2... Join the RWT Partnership, Note from the RWT Chair

Page 3...Self-employment project, Fundraiser for Breast Cancer Now

Page 4...Platinum Jubilee Grants

Page 5... Events & Activities

## Contact us

Rudheath and Witton  
Together

C/O Groundwork CLM  
Waterside House  
Navigation Road  
Northwich  
CW8 1BE

[info@rudheathandwitton.org.uk](mailto:info@rudheathandwitton.org.uk)

Community Engagement  
Officer (Lesley)  
07513 125314

[Imoore@changing-lives-together.org.uk](mailto:Imoore@changing-lives-together.org.uk)  
Project Manager (Heidi)  
07788 340957

[Heidi.bibby@groundwork.org.uk](mailto:Heidi.bibby@groundwork.org.uk)

[www.rudheathandwitton.org.uk](http://www.rudheathandwitton.org.uk)



@rudheathandwitton



@rudheathandwitton



@RAWTogether

## Join the RWT Partnership

Did you know that the RWT committee is called the Partnership?

The Partnership are all local residents and key to the success of the Big Local project and we're looking for new members to join us. They make the important decisions about what RWT spends their funding on and keep to the local community plan.

All we ask for is a few hours a month to prepare for and attend our meetings. You don't need any previous experience and just need to be willing to add your voice to the project. Preferably you should live in the RWT area, but people from outside the area with an interest are very welcome.

Interested? We'd love to hear from you.

You can [find out more here](#) or get in touch for an informal chat about the role.

## Note from the RWT Chair

I'm delighted to be in my second term as Chair and to see the project through until the end of the funding in March 2024. A huge thank you to Nic as our outgoing Chair and we're delighted that she remains very much part of RWT.

We've still got a lot to achieve against our community plan and have some exciting projects in the pipeline for later this year and into next year.

Our biggest concern at the moment is the cost of living crisis and how this will affect our residents. Our recent survey identified that the biggest worry is food and energy costs and we're currently working with other organisations to be able to offer some support for the most vulnerable people in the community. We are hoping to launch this project in early November, information will be posted on our social media pages.

Finally as you can see above RWT are looking for new members to join the Partnership, being part of Big Local has given me lots of opportunities such as training and development as well as a huge confidence boost. Why not give it a go?

Kind Regards

*Zoe*

Zoe Cadman – RWT Chair



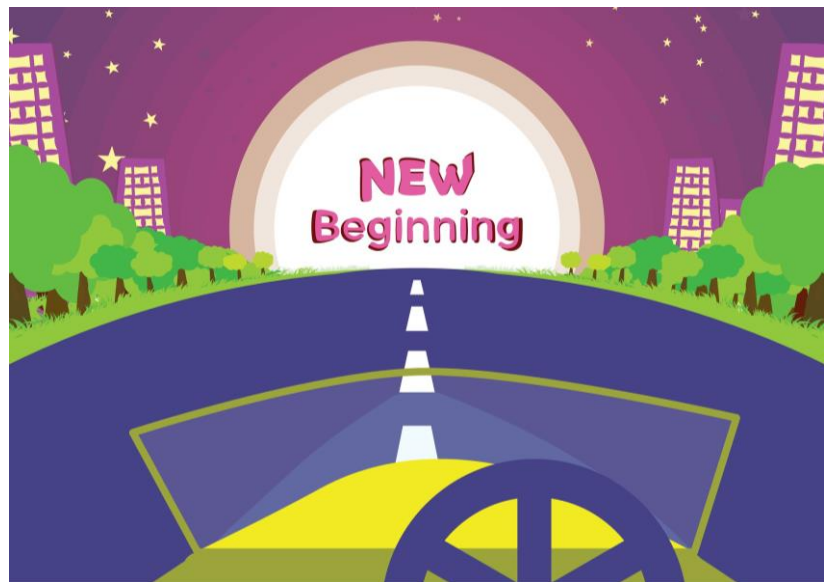
## RWT Self-Employment Support

Our self-employment project has been running since January and we've seen a few people successfully start their own small business with support from Geoff Kirkman.

RWT are offering free, tailored one-to-one support to local residents who are thinking of starting their own small business, whether a fresh start or as a way to make a hobby or skill give you some income.

Geoff can work with you whether it's just an idea or something you've started and now need some help. He can support with business plans, marketing, cash flow and much more...

Contact Geoff directly for an informal chat about your idea and how he can support you [geoff@offploy.org](mailto:geoff@offploy.org) or Tel: 07720 215096.



## Fundraiser for Breast Cancer Now

At the last of our summer park days we held an afternoon tea to support Breast Cancer Now. As some of you may know this is a cause very close to the heart of our staff members, both having suffered with breast cancer and approximately 55,000 people being diagnosed every year. Our afternoon tea raised £35.90 towards supporting people with cancer. Thank you to all who donated.





## Platinum Jubilee Grants

Following the sad news of the passing of Her Majesty Queen Elizabeth II we reflected on the ways that the local community celebrated her 70 years on the throne. RWT were able to offer small grants to help support the celebration. We gave out 7 grants to streets and communities in the area to hold their very own street parties, bringing communities together.

We're really glad we were able to do this to celebrate our longest serving monarch.



*'In the Community, With the Community, For the Community'*

## Events and Activities

### October Half-Term

Crikey – there was no messing about this year! Both the Halloween Disco and the Blackpool Coach Trip sold out in days, so unfortunately there are no tickets left for either of these activities. If we have any cancellations we will post out onto our Facebook page.

We are hoping to be able to give out the popular recipe bags this half-term but we are waiting to hear the result of an application to fund them. We'll post information on our Facebook page as soon as we're able to. Fingers crossed.

### Christmas Bingo

Our next community bingo session will be on **Friday 25<sup>th</sup> November, 6pm at Rudheath Social Club.**

This will be a ticketed event and hopefully we'll have no problems with the microphone like last time!

More info and ticket links will be posted nearer the time.



### Christmas Activities

Sorry to bring up the C-word but it will be here before we know it!

We're planning some Christmas based activities for late November/ December so we'll keep you posted.

We're also planning to distribute treat boxes to people who live alone and are isolated and also pensioners in the area. More information will be posted to our social media once we have the final details.

If you think you could help us with items for the boxes or time to help pack them please get in touch.

**If you've any ideas for activities please let us know as we want to be sure we're putting on things that you'll all enjoy, you can contact us with the details on P2 or via social media.**